



# Broadway

@ PARK PLACE

Mall-Anchored Shops

NOW UNDER CONSTRUCTION

BROADWAY @ PARK PLACE

5870 East Broadway Blvd.  
Tucson, AZ

# The Mall



Grand  
Opening  
September 1st,  
1965

Park Place is a fashion and entertainment destination located in one of the strongest retail corridors in Tucson. Anchoring the Broadway business area, the mall offers a strong lineup of retail and restaurant options as well as a state-of-the-art 20-screen cinema.

128  
RETAILERS

20+  
RESTAURANTS

12+  
options  
ENTERTAINMENT +  
TECH + GAMING

RETAIL RESTAURANTS ENTERTAINMENT

OLD NAVY

CINEMARK  
The Best Seat In Town

VANS

VICTORIA'S  
SECRET

FOREVER 21

H&M

ULTA  
BEAUTY

Yard House

Total Wine  
& MORE

SPORTS ENTERTAINMENT  
ROUND1

BROADWAY @ PARK PLACE





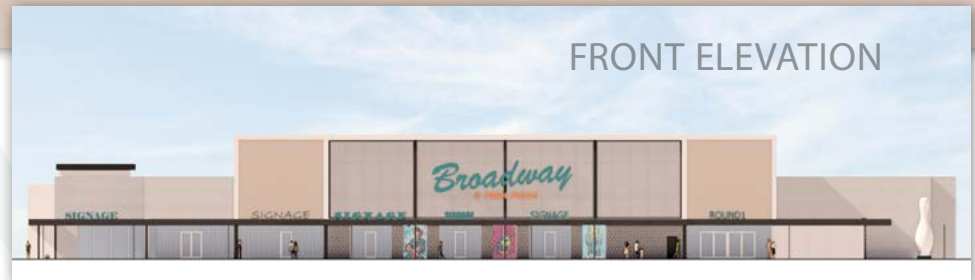
MALL-ANCHORED SHOPS | BROADWAY AT PARK PLACE | 5870 EAST BROADWAY BOULEVARD

## Conceptual Rendering



### NORTHEAST CORNER VIEW

The retail façade will undergo a full architectural renovation, inspired by the Mid-Century design of the original 'Park Mall'. A vibrant new patio space for the endcap restaurant, prominent signage and pedestrian-oriented touches will bring restored energy to this iconic part of the Tucson community.



BROADWAY @ PARK PLACE







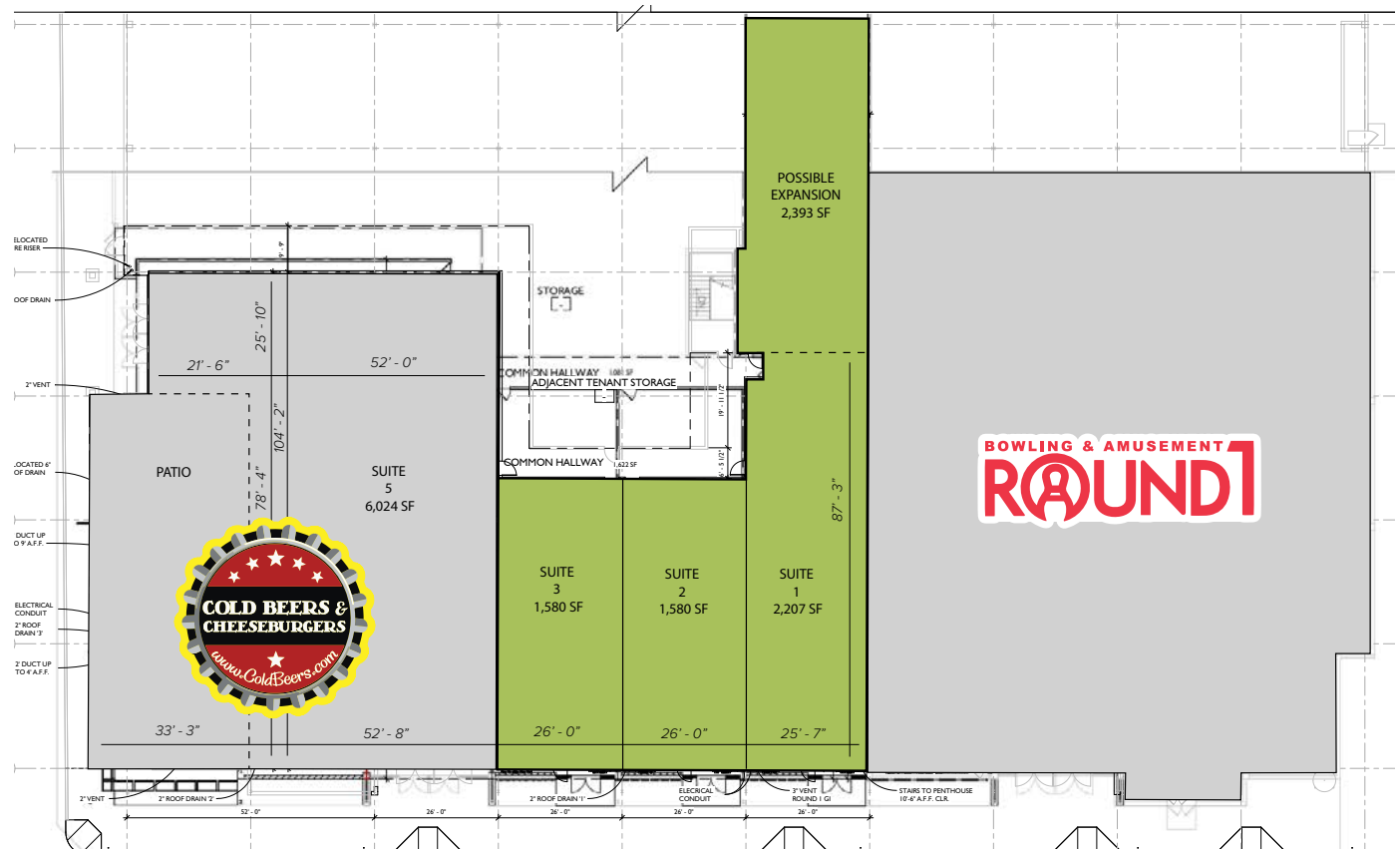


# Site Plan

## DEMISING FLOOR PLAN

SUITE		SQUARE FOOTAGE
1	Available	2,207
Can Be Expanded Up To 4,600 SF		
2	Available	1,580
3	Available	1,580
5	Cold Beers & Cheeseburgers	6,024

Please Note: Suites can be combined



## CONCEPTUAL ELEVATIONS





Overview





MALL-ANCHORED SHOPS | BROADWAY AT PARK PLACE | 5870 EAST BROADWAY BOULEVARD

*Elevated Eye Candy*



BROADWAY @ PARK PLACE





MALL-ANCHORED SHOPS | BROADWAY AT PARK PLACE | 5870 EAST BROADWAY BOULEVARD

# *Desert Dreams on Display*

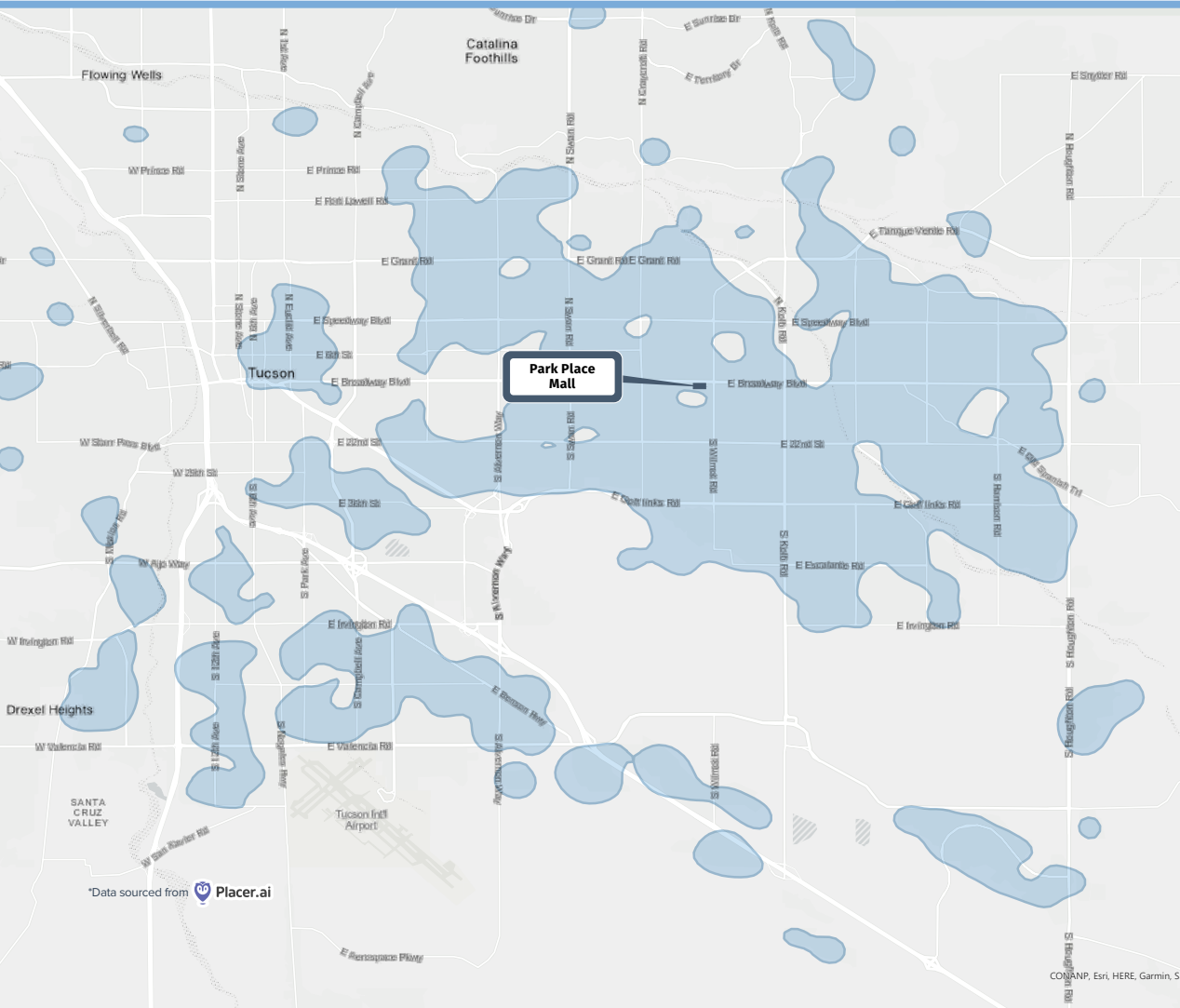


BROADWAY @ PARK PLACE





# Trade Area Analysis



## PROPERTY HIGHLIGHTS

- E Broadway Boulevard carries 52,750 vehicles per day.
- Over 7,100,000 visits in the last 12 months.
- Park Place Mall is 97% leased.



## LOCATION RANKINGS IN ARIZONA



#1/19 LOCATIONS



#1/11 LOCATIONS



#3/21 LOCATIONS



#3/29 LOCATIONS

TRUE TRADE AREA—70% OF ALL FOOT TRAFFIC.





# We'd Love To Partner With You

## FOR LEASING INFORMATION

### RYAN DESMOND

602.931.4489

[rdesmond@w-retail.com](mailto:rdesmond@w-retail.com)

### BRYAN BABITS

602.931.4491

[bbabits@w-retail.com](mailto:bbabits@w-retail.com)

### JAKE McCLAUGHRY

602.368.1088

[jmclaughry@w-retail.com](mailto:jmclaughry@w-retail.com)

## DEVELOPER CONTACT

### HEATHER WISEMAN

**Sr. Vice President | Leasing**

303.656.8713

[hwiseman@evgre.com](mailto:hwiseman@evgre.com)

The information contained within this brochure has been obtained from sources other than Western Retail Advisors, LLC. Western Retail Advisors has not verified such information and makes no guarantee warranty or representation about such information. It is your responsibility to independently confirm its accuracy and completeness. Any dimensions, specifications, floor plans and information may not be accurate and should be verified by you prior to the lease or purchase of the property.



Developed by:

## Evergreen

2390 E Camelback Rd, Suite 410 | Phoenix, AZ 85016

602.808.8600 | [evgre.com](http://evgre.com)

\*Developer



## WESTERN<sup>\*</sup>

RETAIL ADVISORS

2555 E Camelback Rd, Suite 200 | Phoenix AZ, 85016

602.778.3747 | [w-retail.com](http://w-retail.com)

\*Owner/Agent

